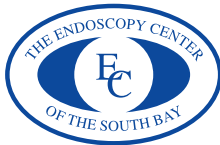


Getting Ready for Colonoscopy

at the
Endoscopy Center of the South Bay

Please read this instruction booklet at least
ONE WEEK BEFORE your procedure.

We understand getting ready for your procedure can be challenging, so this booklet was created to help guide you through the process and to answer questions you may have.



Endoscopy Center of the South Bay
23560 Madison St., Suite 109 • Torrance, CA 90505

310-325-6331

www.SouthbayGastro.com

See back of booklet for **APPOINTMENT TIME & LOCATION**

Table of Contents

Page

1. Important Medication Instructions.....	3
2. One Day Before Procedure	4-5
3. The Day of Your Procedure	6
4. Maps of Locations	7
5. Appointment Information.....	Back

Important Medication Instructions

DIABETICS

1. If you are on any type of medication for diabetes, oral medications or insulin, you should bring the medications with you on the day of procedure.
2. If you are currently taking oral diabetes medications, please **DO NOT** take your pills on the day of your procedure until after the procedure.
3. If you are on insulin, you should administer insulin according to your usual instructions on the day of preparation while you are on clear liquids and taking laxatives. Your blood sugar will be checked when you arrive in the Endoscopy Center prior to your procedure.
4. If you are on an insulin pump, you should obtain instruction from your endocrinologist specifically for your scheduled procedure.

HEART AND BLOOD PRESSURE MEDICATIONS

1. Please take all your usual blood pressure and heart medications on the day you are preparing for the procedure **AND** on the morning of the procedure with a small amount of water (2 oz) no later than 6 am.
2. If you have a mechanical heart valve, you will require antibiotics prior to your procedure. If you are allergic to penicillin, please follow special instruction.

BLOOD THINNING MEDICATION (ANTICOAGULANTS)

1. If you are on blood thinners due to high risk for heart attack such as coronary stent placed in past year, severe cardiomyopathy, severe aortic valve stenosis, or if you have a high risk for stroke due to unstable cardiac arrhythmias, your cardiologist or primary physician prescribing your medication must be notified of your scheduled procedure and specific instruction regarding your medication will be obtained.
2. If you do not have a medical condition that requires a prescribed blood thinner, you should try to avoid heavy usage of over the counter agents that may increase bleeding risk such as aspirin, ibuprofen (motrin, advil, naprosyn), St. John's Wort, ginko biloba, vitamin E at least 5 days prior to your procedure. Tylenol is ok to take.

SEIZURE MEDICATIONS, INHALERS AND THYROID MEDICATIONS

1. You should not stop any type of seizure medications even on the day of your procedure. You may take the medication no later than 6 am with 2 oz of water the morning of your procedure.
2. You should continue to use inhaler medication for respiratory disease and bring them with you to the endoscopy center.
3. You should not stop thyroid medications even on the day of your procedure. You must take the medication no later than 6 am with 2 oz of water the morning of your procedure.

One Day Before Procedure

- 1. ONLY CLEAR LIQUIDS THE ENTIRE DAY PRIOR TO PROCEDURE - NO SOLID FOOD OR MILK PRODUCTS. DRINK LIQUIDS THAT CONTAIN ELECTROLYTES AND CALORIES THROUGHOUT THE DAY TO AVOID DEHYDRATION.**

Clear liquid examples are water, Gatorade, crystal light, strained fruit juices without pulp, coffee or tea without creamer or milk, clear chicken, beef or vegetable broth, carbonated or noncarbonated soft drinks, jello, popsicles. Please avoid **red or **purple** colored drinks or jello.

- 2. PURCHASE DULCOLAX BISACODYL LAXATIVE TABLETS, MIRALAX POWDER AND GATORADE 64 OZ OVER THE COUNTER.**
- 3. TAKE 20 MG OF DULCOLAX (4 TABLETS OF 5 MG DULCOLAX) AT 12PM WITH CLEAR LIQUIDS.**
- 4. AT 4:00 PM MIX ENTIRE 8.3 OZ BOTTLE OF MIRALAX INTO THE 64 OZ BOTTLE OF GATORADE UNTIL IT COMPLETELY DISSOLVES.**



8.3 oz. Miralax



64 oz. Gatorade

← **NOT RED**
or **PURPLE!**

Cont'd

5. TAKE THE MIRALAX/GATORADE SOLUTION (8.3 OZ OF MIRALAX POWDER WELL MIXED WITH 64 OZ OF GATORADE) STARTING AT 4PM. Gatorade works well to achieve a good colon preparation, but other clear solutions may be substituted if necessary.

**Try to drink this solution within 2 hours, but if your stomach feels too full or if you are nauseated, wait until you are able to tolerate more.

**The goal is to drink until your stool is completely clear, without color or residue, like tap water. Please be aware that Dulcolax and Miralax will induce diarrhea, but the time of onset may be different for each individual. Some may also experience some cramping pain from laxatives.

**Use hemorrhoid creams or A&D ointment if needed to protect anal area from being overly irritated while taking the laxatives.



DO NOT EAT OR DRINK ANYTHING AFTER MIDNIGHT; AVOID CHEWING TOBACCO, CHEWING GUM OR EATING CANDY TWO HOURS BEFORE PROCEDURE. It is extremely important to have no food or liquid in your mouth or stomach prior to procedure in order to avoid aspiration pneumonia risk due to the sedatives.



(4) 5 mg Dulcolax Tablets

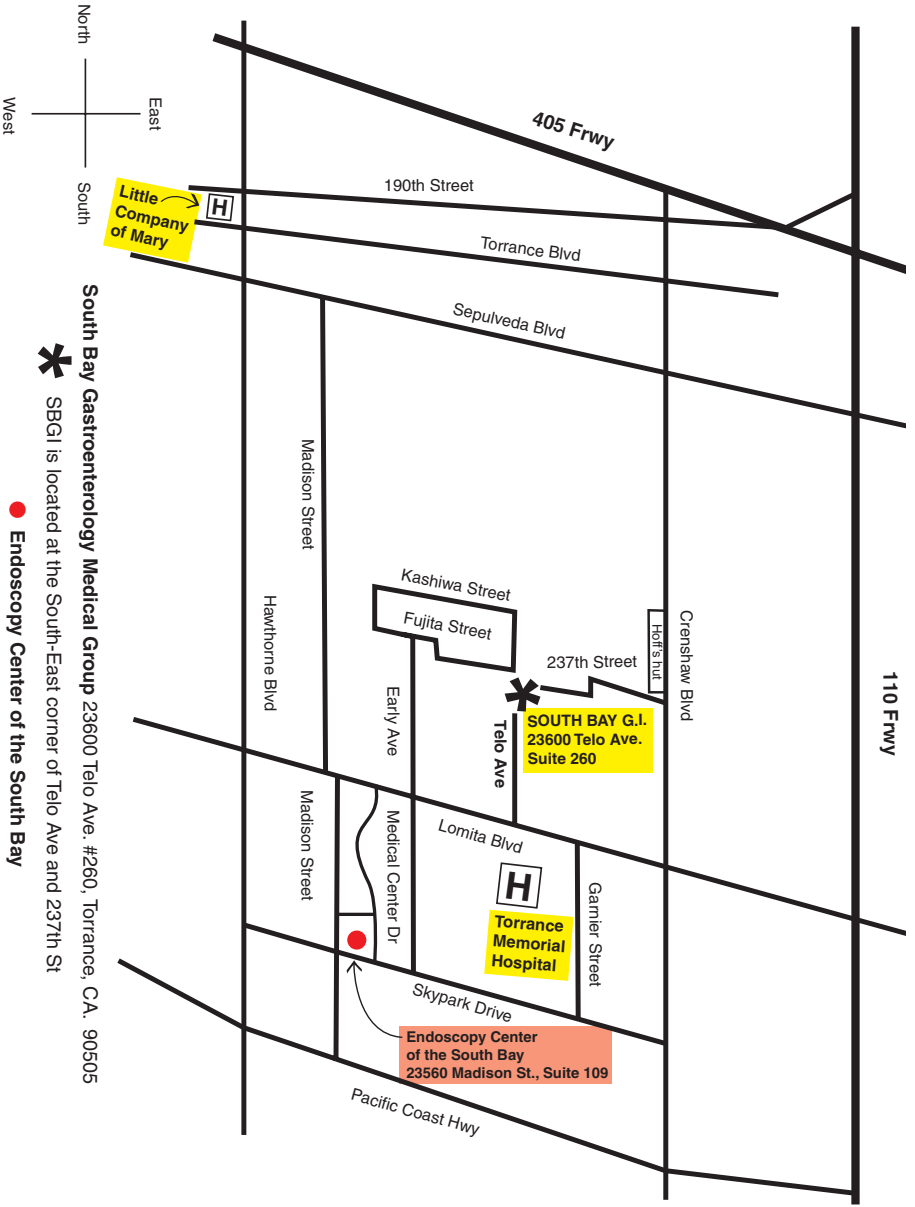
The Day of Your Procedure

You should plan on being at the Center for approximately 3 hours from the time you arrive, until discharge.

Please bear in mind that appointments are approximate times. If delays occur, we will do our best to update you and your driver in a timely manner.

1. You must NOT work or drive on the day of your procedure due to sedatives used for the procedure.
2. You must have a driver who will be taking you home after the procedure; your driver should be waiting at the endoscopy center at time of discharge.
3. You must have your insurance card, photo ID for verification, and you will need to settle all of the payment that you are responsible for at the time that you check in. Please do not bring any unnecessary jewelry or valuables with you. If you wear contacts, please wear your glasses day of procedure, leave contacts at home.
4. You must have fasted since midnight with no solids or liquids prior to having your procedure. Any fluid or food in your stomach will increase risk for aspiration pneumonia due to sedatives used for the procedure. If you must take blood pressure or heart medication the morning of your procedure, please take the medicine prior to 6 am with no more than 2 oz. of water.
5. You must arrive 1 hour prior to your procedure time for the check in process. Please arrive earlier if you usually require more time to walk, dress, and undress.
6. You should plan on being at the endoscopy center approximately 3 hours from your arrival time to the time of discharge.
7. After the procedure, you should plan on small and easily digestible foods and avoid foods that usually give you indigestion or gas. You should resume normal meals the next day.
8. After a colonoscopy, your bowel movements may not return to usual pattern for 2 to 4 days.





South Bay Gastroenterology Medical Group 23600 Telo Ave. #260, Torrance, CA. 90505

***** SBGI is located at the South-East corner of Telo Ave and 237th St

● Endoscopy Center of the South Bay

Appointment information:

Patient Name: _____

Physician: _____

Preparation Date: _____

Appointment Date: _____

If you need to cancel your appointment, this must be done 48 business hours prior to your procedure. If not, you will be charged a fee of \$100.00.

Arrival Time: _____ Discharge Time: _____

Location of Procedure:

Your procedure will be at the following location:

The Endoscopy Center of The South Bay

23560 Madison St., Suite 109

Torrance, CA 90505

310-325-6331

Torrance Memorial Medical Center

G.I. Lab/Located in the Basement Level

3330 Lomita Blvd.

Torrance, CA 90505

310-517-4707

Little Company of Mary Hospital

G.I. Lab/Located on the First Floor of Hospital

4101 Torrance Blvd.

Torrance, CA 90503

310-303-5362

Scheduler's Name: _____

Telephone: (310) 539-2055 ext. _____